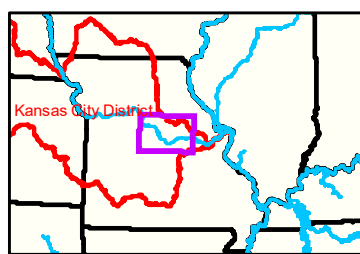


Notes

Gage_U

Herman Gage = 10.1 at time of collection 10 May 2021"



LEGEND

[Red line]	< 8	[Red line]	< 8 ft	[Green square]	Green Passing
[Yellow line]	8 - 9	[Yellow line]	8 - 9 ft	[Red triangle]	Red Passing
[Light green line]	9 - 9.5	[Light green line]	9 - 10 ft	[Green diamond]	Green Crossing
[Cyan line]	9.5 - 10	[Cyan line]	10 - 12 ft	[Red diamond]	Red Crossing
[Blue line]	10 - 12	[Black line]	River Mile		
[Dark blue line]	12 - 14	[Dashed line]	Sailing Line		
[Light blue line]	14 - 16	[Black line]	BSNP Structure		
[Dark blue line]	> 16	[Red line]	Levee		

Buoy

[Green circle]	Green	[Green cross]	AIS Green CAN
[Red circle]	Red	[Red cross]	AIS Red NUN
[Green circle]	Green	[Green circle]	Green CAN
[Red circle]	Red	[Red circle]	Red NUN

NOTES:
Horizontal Coordinate System:
World Geodetic System of 1984 (WGS84), projected to the Universal Transverse Mercator (UTM) Zone 15 North. Distance units in U.S. Survey Feet
Vertical Datum:
Soundings are shown in feet and indicated depths are referenced to water surface at time of collection.
The information depicted on this map represents the results of a survey conducted on the date indicated and can only be considered to represent the general condition existing at that time.
The location of navigation aids are based on and provided by the U.S. Coast Guard.



DISCLAIMER: The U.S. Army Corps of Engineers (USACE) provides this information as a service to the public. It is not intended to be used for any purpose other than that for which it was intended. The USACE makes no warranty, express or implied, regarding the accuracy, reliability, or completeness of the information provided. The USACE is not responsible for any errors or omissions in this information. The user assumes all liability for any use of this information. The USACE is not responsible for any damage or injury resulting from the use of this information. The USACE is not responsible for any loss of data or information. The USACE is not responsible for any loss of time or money. The USACE is not responsible for any loss of property. The USACE is not responsible for any loss of life. The USACE is not responsible for any loss of limb. The USACE is not responsible for any loss of sight. The USACE is not responsible for any loss of hearing. The USACE is not responsible for any loss of speech. The USACE is not responsible for any loss of memory. The USACE is not responsible for any loss of intelligence. The USACE is not responsible for any loss of reason. The USACE is not responsible for any loss of sanity. The USACE is not responsible for any loss of mind. The USACE is not responsible for any loss of soul. The USACE is not responsible for any loss of heaven. The USACE is not responsible for any loss of hell. The USACE is not responsible for any loss of paradise. The USACE is not responsible for any loss of purgatory. The USACE is not responsible for any loss of purgatory. The USACE is not responsible for any loss of purgatory.

KANSAS CITY DISTRICT MISSOURI RIVER AREA OFFICE

Submitted By:	MIRAO
Reviewed By:	MIRAO
Checked By:	MIRAO

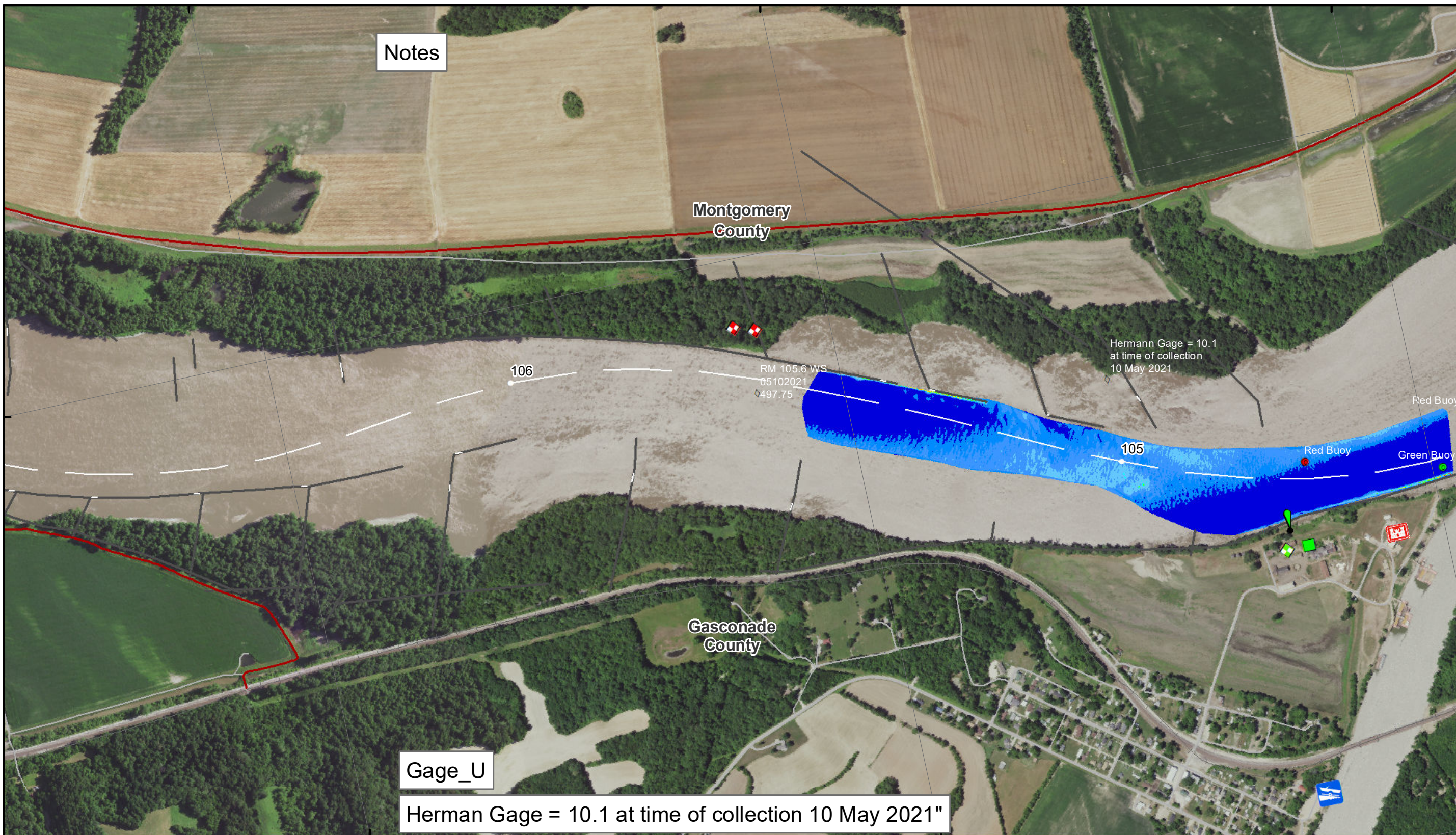
Survey Information
MO_02_LMR
MO_02_LMR_20210510_CS_104_5_105_5_SORT
10 May 2021

Sheet Number
2 of 46

91°35'W

91°34'W

91°33'W



Notes

Gage_U

Herman Gage = 10.1 at time of collection 10 May 2021"

Montgomery County

Gasconade County

Hermann Gage = 10.1 at time of collection 10 May 2021

RM 105.6 WS 05102021 497.75

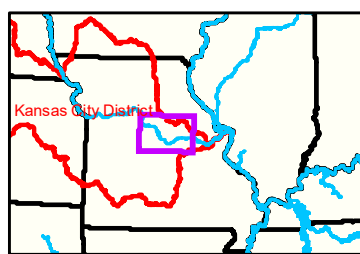
106

105

Red Buoy

Red Buoy

Green Buoy



91°35'W

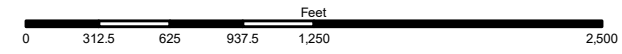
LEGEND

- < 8
- 8 - 9
- 9 - 9.5
- 9.5 - 10
- 10 - 12
- 12 - 14
- 14 - 16
- > 16
- < 8 ft
- 8 - 9 ft
- 9 - 10 ft
- 10 - 12 ft
- River Mile
- Sailing Line
- BSNP Structure
- Levee
- Green Passing
- Red Passing
- Green Crossing
- Red Crossing

- Green
- Red
- Junction

- Buoy**
- AIS Green CAN
 - AIS Red NUN
 - Green CAN
 - Red NUN

91°34'W



NOTES:
 Horizontal Coordinate System:
 World Geodetic System of 1984 (WGS84), projected to the Universal Transverse Mercator (UTM) Zone 15 North. Units in U.S. Survey Feet

Vertical Datum:
 Soundings are shown in feet and indicated depths are referenced to water surface at time of collection.

The information depicted on this map represents the results of a survey conducted on the date indicated and can only be considered to represent the general condition existing at that time.

The location of navigation aids are based on and provided by the U.S. Coast Guard.



DISCLAIMER: The U.S. Army Corps of Engineers (USACE) provides this information as a service to the public. It is not intended to be used for any purpose other than that for which it was provided. The USACE makes no warranty, express or implied, regarding the accuracy, reliability, or completeness of the information. The USACE is not responsible for any errors or omissions in this information. The USACE is not liable for any damages, including consequential damages, arising from the use of this information. The USACE is not responsible for any actions taken based on this information. The USACE is not responsible for any actions taken based on this information.

KANSAS CITY DISTRICT MISSOURI RIVER AREA OFFICE	
Submitted by:	MIRAO
Reviewed by:	MIRAO
Checked by:	MIRAO
Approved by:	MIRAO

Survey Information

MO_02_LMR
 MO_02_LMR_20210510_CS_104_5_105_5_SORT
 10 May 2021

Sheet Number 3 of 46

38°41'N

38°41'N

38°40'N